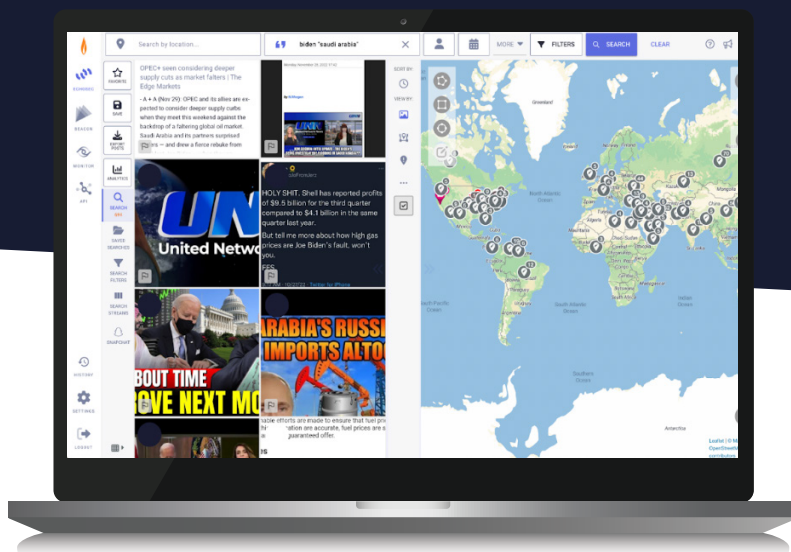


# Flashpoint for Law Enforcement & Public Safety

Cybercrime, terrorism, and trafficking are only a few of the challenges today's law enforcement teams face. Law enforcement and public safety teams need to connect the dots between real-world crimes, and the communities and transnational criminal organizations perpetuating them. Many of these groups operate in online spaces that are difficult to access and time-consuming to navigate.

Flashpoint's law enforcement solutions enable seamless investigations across illicit forums, encrypted messaging apps, mainstream social media, dark web marketplaces, and beyond. Easily sift through a sea of online chatter to find the actionable information you need to preserve public safety.



## Our law enforcement solutions include:

- Extensive data collections and technical intelligence
- Support from best-in-class intelligence experts
- Selector Enrichment—a force multiplier for your organization
- Real-time, geolocated social media data, and intuitive analytical functionality

## Key initiatives we support:

### COUNTER-NARCOTICS

- Access extensive social networks and illicit discussion channels to identify and stop illegal drug trafficking.

### COUNTERTERRORISM

- Access extensive social networks and illicit discussion channels to identify and monitor planning, recruitment tactics, and campaigns.

### CRISIS AND EVENT MONITORING

- Improve situational awareness with real-time social data from anywhere in the world. Identify mentions of relevant keywords, groups, and topics, and analyze their potential impact.

### IDENTITY INTELLIGENCE

- Connect people with places, events, or entities, to discover and assess potential threat actors and their activities.

This comprehensive solution set delivers access to everything Flashpoint has to offer to support Law Enforcement teams—from award-winning software, services, and customer success.

LAW ENFORCEMENT SOLUTIONS	
<b>Flashpoint Intelligence Platform</b> delivers access to finished intelligence reports, including data from illicit communities, chat services platforms, and the open web, along with pertinent technical data all in a single platform	✓
<b>Selector Enrichment</b> allows you to augment closed source intelligence by leveraging our sensitive data collections to obtain additional identifiers on individuals or entities	✓
<b>Flashpoint Physical Security Intelligence (PSI)</b> delivers real-time data from a wide range of OSINT sources in a user-friendly dashboard and uses geographic enrichments to provide location-based insights and natural language processing to detect keywords, categorize threats, and seamlessly translate content from hundreds of languages.	✓
<b>Managed Intelligence Services</b> provides access to Flashpoint analysts to force multiply your intelligence efforts, saving time and resources	✓
<b>Customer Success Team support</b> , comprised of former analysts with industry-related experience, to provide ongoing necessary support and to ensure users are gaining value from the solutions	✓
<b>Flashpoint Training Academy</b> ensures your team realizes continual value from Flashpoint's tools and is confident in their functionality	✓

## ABOUT FLASHPOINT

Trusted by governments, commercial enterprises, and educational institutions worldwide, Flashpoint helps organizations protect their most critical assets, infrastructure, and stakeholders from security risks such as cyber threats, ransomware, fraud, physical threats, and more. Leading security practitioners—including physical and corporate security, cyber threat intelligence (CTI), vulnerability management, and vendor risk management teams—rely on the Flashpoint Intelligence Platform, comprising open-source (OSINT) and closed intelligence, to proactively identify and mitigate risk and stay ahead of the evolving threat landscape. Learn more at [flashpoint.io](https://flashpoint.io).